

==== Shimadzu LabSolutions Analysis Report =====

Sample Name	: DL V24 R1		
Sample ID	:		
Data Filename	: DL V24 R1_20241127_DL V24_SFB_B_ST1_0.8 mL_45 min_Start_001.lcd		
Method Filename	: SFB_B_ST1_0.8 mL_45 min_Start.lcm		
Batch Filename	: 20241203_DL V23-24 Postrun.lcb		
Vial #	: 2-1	Sample Type	: Unknown
Injection Volume	: 10 uL		
Date Acquired	: 11/27/2024 9:46:44 AM	Acquired by	: System Administrator
Date Processed	: 12/3/2024 8:36:36 AM	Processed by	: System Administrator

<Method>

<<Header>>

Generated	: 4/24/2024 3:47:23 PM
GeneratedBy	: System Administrator
Modified	: 12/3/2024 8:25:24 AM
ModifiedBy	: System Administrator

<<System Controller>>

Model	: SCL-40
Event1	: Off
Event2	: Off
Sample Load Timing	: Off

<<Data Acquisition>>

LC Stop Time	: 45.00 min
Detector A Name	: Detector A
Detector A Sampling Frequency	: 2 Hz
Detector A Start Time	: 0.00 min
Detector A End Time	: 45.00 min

<<Pump>>

Mode	: Isocratic flow
Pump A	: LC-40D
Pump A Flow/Pressure	: Flow
Pump System A Flow	: 0.8000 mL/min
Pump System A Flow Slope	: 20.00 min
Pump A PressMax	: 90 bar
Pump A PressMin	: 0 bar
Pump A Valve Model	: Switching Valve
Pump A Valve	: B
Pump A Compressibility Setting	: On
Pump A Mobile Phase Settings	: 0.45 /GPa

<<Autosampler>>

Autosampler Model	: SIL-40
Enable Autosampler	: Use
Rinse Type	: External only
Specify Plate	: Off
Rinsing Volume	: 500 uL
Cut Off Loop	: Off
Specify Needle Stroke	: Off
Rinsing Speed	: 35 uL/sec
Sampling Speed	: 5.0 uL/sec
Rinse Port R0 Purge Time	: 2.0 min
Measuring Line Purge Time	: 5.0 min
Rinse Mode	: Before and after aspiration
Rinse Dip Time	: 0 sec
Measuring Line Purge Volume	: 100 uL
Air Gap Volume	: Off
Rinse Port Liquid	: R0

<<Sample Pretreatment>>

Mode	: Standard
------	------------

<<Oven>>

Oven Model	: CTO-40C
Enable Oven	: Use
Oven Temperature	: 25 C
Maximum Temperature	: 105 C

Ready Check : On
 Wait Time : 5 min
 Ready Range : 1.0 C
 Fan Speed : Auto
 Cooler Mode : Auto
 Valve 1/L : FCV-0206
 Valve 1/L Position : 1: Column1

<<Detector A>>

Model : RID-20A
 Mode : Analytical
 Polarity : +
 Use Cell Temp. : Use
 Cell Temp. : 40.0 C
 Response : 1.5 sec
 Intensity Unit : Volt
 Auxiliary Range : 1.0E-3 RIU/V
 Recorder Range : 100.00 uRIU/FS
 Synchronize with Auxiliary : Off
 Purge Time : 20 min

<<LC Time Program>>

Time	Module	Command	Value	Comment
0.01	RID-20A(DET.A)	Zero		
45.00	Controller	Stop		

<<Peak Integration>>

<Detector A>

Channel : Ch1
 Width : 5 sec
 Slope : 2000 uV/min
 Drift : 0 uV/min
 T.DBL : 1000 min
 Max Slices : 0
 Peak Top Detection : Normal
 RT Compensation Mode : Fine
 Min.Area/Height is made effective in Manual Integration : Off
 Min.Area/Height : 1000 counts
 Calculated by : Area
 Noise Calculation Settings : Noise Data : Current Data
 Calculation Method : ASTM
 Range : Whole Range
 Interval : 0.5 min
 Include the Peak Detected Range : Off
 Detection Limit Coefficient : 3.3
 Quantitative Limit Coefficient : 10.0
 Drift Calculation Settings : 0.000 - 15.000 min

<<Integration Time Program(Method)>>

<Detector A>

Channel : Ch1
 Time Program : None

<<Integration Time Program(Data)>>

<Detector A>

Channel	Time Program	No. Enable	Time(min)	Command	Value
1	[Yes]		11.667	Move BL	12.141
2	[Yes]		12.142	Move BL	11.24
3	[Yes]		12.141	Split Peak	

<<Identification>>

<Detector A>

Window/Band : Window
 Window : 5.00 %
 Identification Method : Absolute
 Peak Selection : Closest Peak
 Display not identified peaks : Not display

<<Quantitative>>

<Detector A>

Quantitative Method : External Standard
 Calculated by : Area
 # of Calibration Levels : 14
 Curve Fit Type : Linear
 Zero : Not Forced
 Weighting Method : None
 X Axis of Calib. Curve : Conc.
 Units : mol/L

<Detector A>

```

ID#                      : 1
Name                     : Methanol
Type                    : Target
Channel                 : Ch1
Retention Time          : 14.400 min
Retention Index         : 0
Concentration           : [1]=3.016738          [2]=1.049395          [3]=0.4943277
                        [4]=0.2893701          [5]=0.1127578          [6]=0.06136267
                        [7]=0.01619725         [8]=3.016738          [9]=1.049395
                        [10]=0.4943277         [11]=0.2893701        [12]=0.1127578
                        [13]=0.06136267        [14]=0.01619725
Peak Selection          : Default(Closest Peak)
Calculated by           : Default(Area)
Curve Fit Type          : Default(Linear)
Zero                    : Default(Not Forced)
Weight                  : Default(None)
Window/Band             : Default(Window)
Spiked                  : 0.000
1st Coefficient         : 4.720087e+005
Intersection            : 1.693726e+003
Correction Factor       : 1.000000
Standard concentration factor : 1.000000

```

```

ID#           : 2
Name          : Glycerin
Type          : Target
Channel       : Ch1
Retention Time: 10.000 min
Retention Index: 0
Concentration : [1]=2.958375      [2]=1.078646      [3]=0.5353454
                [4]=0.3066948      [5]=0.114594      [6]=0.05901699
                [7]=0.0117174      [8]=2.958375      [9]=1.078646
                [10]=0.5353454     [11]=0.3066948    [12]=0.114594
                [13]=0.05901699    [14]=0.0117174
Peak Selection: Default(Closest Peak)
Calculated by : Default(Area)
Curve Fit Type: Default(Linear)
Zero          : Default(Not Forced)
Weight        : Default(None)
Window/Band   : Default(Window)
Spiked        : 0.000
1st Coefficient: 7.326784e+006
Intersection  : 2.573900e+005
Correction Factor: 1.000000
Standard concentration factor: 1.000000

```

```

ID#           : 3
Name          : n-Propanol
Type         : Target
Channel      : Ch1
Retention Time : 20.000 min
Retention Index : 0
Concentration : [1]=3.02526           [2]=1.092217           [3]=0.5139845
               [4]=0.3105323         [5]=0.09785473        [6]=0.04497364
               [7]=0.01087275        [8]=3.02526          [9]=1.092217
               [10]=0.5139845         [11]=0.3105323       [12]=0.09785473
               [13]=0.04497364        [14]=0.01087275
Peak Selection : Default(Closest Peak)
Calculated by : Default(Area)
Curve Fit Type : Default(Linear)
Zero          : Default(Not Forced)
Weight        : Default(None)
Window/Band   : Default(Window)

```

Spiked : 0.000
 1st Coefficient : 3.955755e+006
 Intersection : -2.585461e+004
 Correction Factor : 1.000000
 Standard concentration factor : 1.000000

ID# : 4
 Name : 1,2 Propandiol
 Type : Target
 Channel : Ch1
 Retention Time : 12.400 min
 Retention Index : 0
 Concentration : [1]=2.977546 [2]=1.016412 [3]=0.5030017
 [4]=0.3027638 [5]=0.1023958 [6]=0.04970167
 [7]=0.01157971 [8]=2.977546 [9]=1.016412
 [10]=0.5030017 [11]=0.3027638 [12]=0.1023958
 [13]=0.04970167 [14]=0.01157971

Peak Selection : Default(Closest Peak)
 Calculated by : Default(Area)
 Curve Fit Type : Default(Linear)
 Zero : Default(Not Forced)
 Weight : Default(None)
 Window/Band : Default(Window)
 Spiked : 0.000
 1st Coefficient : 5.771075e+006
 Intersection : 6.007717e+004
 Correction Factor : 1.000000
 Standard concentration factor : 1.000000

ID# : 5
 Name : 1,3 Propandiol
 Type : Target
 Channel : Ch1
 Retention Time : 13.000 min
 Retention Index : 0
 Concentration : [1]=2.976375 [2]=0.9968958 [3]=0.4990984
 [4]=0.2900131 [5]=0.10734 [6]=0.04944145
 [7]=0.0100184 [8]=2.976375 [9]=0.9968958
 [10]=0.4990984 [11]=0.2900131 [12]=0.10734
 [13]=0.04944145 [14]=0.0100184

Peak Selection : Default(Closest Peak)
 Calculated by : Default(Area)
 Curve Fit Type : Default(Linear)
 Zero : Default(Not Forced)
 Weight : Default(None)
 Window/Band : Default(Window)
 Spiked : 0.000
 1st Coefficient : 5.532080e+006
 Intersection : 6.014722e+004
 Correction Factor : 1.000000
 Standard concentration factor : 1.000000

ID# : 6
 Name : iso-Propanol
 Type : Target
 Channel : Ch1
 Retention Time : 16.825 min
 Retention Index : 0
 Concentration : [1]=3.03666 [2]=1.003405 [3]=0.5418687
 [4]=0.3101858 [5]=0.1067771 [6]=0.04972951
 [7]=0.01397083 [8]=3.03666 [9]=1.003405
 [10]=0.5418687 [11]=0.3101858 [12]=0.1067771
 [13]=0.04972951 [14]=0.01397083

Peak Selection : Default(Closest Peak)
 Calculated by : Default(Area)
 Curve Fit Type : Default(Linear)
 Zero : Default(Not Forced)
 Weight : Default(None)
 Window/Band : Default(Window)
 Spiked : 0.000
 1st Coefficient : 3.797216e+006
 Intersection : -2.284739e+004
 Correction Factor : 1.000000
 Standard concentration factor : 1.000000

ID# : 7
 Name : Hydroxyacetone
 Type : Target
 Channel : Ch1

Retention Time : 13.300 min
Retention Index : 0
Concentration : [1]=2.855514 [2]=0.9609004 [3]=0.4875675
[4]=0.3072624 [5]=0.1038742 [6]=0.04860286
[7]=0.009361501 [8]=2.855514 [9]=0.9609004
[10]=0.4875675 [11]=0.3072624 [12]=0.1038742
[13]=0.04860286 [14]=0.009361501
Peak Selection : Default(Closest Peak)
Calculated by : Default(Area)
Curve Fit Type : Default(Linear)
Zero : Default(Not Forced)
Weight : Default(None)
Window/Band : Default(Window)
Spiked : 0.000
1st Coefficient : 4.865699e+006
Intersection : 5.855022e+004
Correction Factor : 1.000000
Standard concentration factor : 1.000000

ID# : 8
Name : Ethylenglykol
Type : Target
Channel : Ch1
Retention Time : 12.200 min
Retention Index : 0
Concentration : [1]=2.933794 [2]=1.030353 [3]=0.4898163
[4]=0.3033639 [5]=0.09840986 [6]=0.059971
[7]=0.01068632 [8]=2.933794 [9]=1.030353
[10]=0.4898163 [11]=0.3033639 [12]=0.09840986
[13]=0.059971 [14]=0.01068632
Peak Selection : Default(Closest Peak)
Calculated by : Default(Area)
Curve Fit Type : Default(Linear)
Zero : Default(Not Forced)
Weight : Default(None)
Window/Band : Default(Window)
Spiked : 0.000
1st Coefficient : 4.284813e+006
Intersection : 4.449721e+003
Correction Factor : 1.000000
Standard concentration factor : 1.000000

ID# : 9
Name : Ethanol
Type : Target
Channel : Ch1
Retention Time : 16.000 min
Retention Index : 0
Concentration : [1]=3.010594 [2]=1.02339 [3]=0.5257763
[4]=0.2939754 [5]=0.0961865 [6]=0.04960971
[7]=0.01299818 [8]=3.010594 [9]=1.02339
[10]=0.5257763 [11]=0.2939754 [12]=0.0961865
[13]=0.04960971 [14]=0.01299818
Peak Selection : Default(Closest Peak)
Calculated by : Default(Area)
Curve Fit Type : Default(Linear)
Zero : Default(Not Forced)
Weight : Default(None)
Window/Band : Default(Window)
Spiked : 0.000
1st Coefficient : 2.109543e+006
Intersection : -9.590194e+003
Correction Factor : 1.000000
Standard concentration factor : 1.000000

ID# : 10
Name : Propionsäure
Type : Target
Channel : Ch1
Retention Time : 13.600 min
Retention Index : 0
Concentration : [1]=2.962704 [2]=0.9915078 [3]=0.5019324
[4]=0.3085198 [5]=0.1036906 [6]=0.04835313
[7]=0.01168534 [8]=2.962704 [9]=0.9915078
[10]=0.5019324 [11]=0.3085198 [12]=0.1036906
[13]=0.04835313 [14]=0.01168534
Peak Selection : Default(Closest Peak)
Calculated by : Default(Area)
Curve Fit Type : Default(Linear)

Zero : Default(Not Forced)
 Weight : Default(None)
 Window/Band : Default(Window)
 Spiked : 0.000
 1st Coefficient : 4.601450e+006
 Intersection : -1.609005e+003
 Correction Factor : 1.000000
 Standard concentration factor : 1.000000

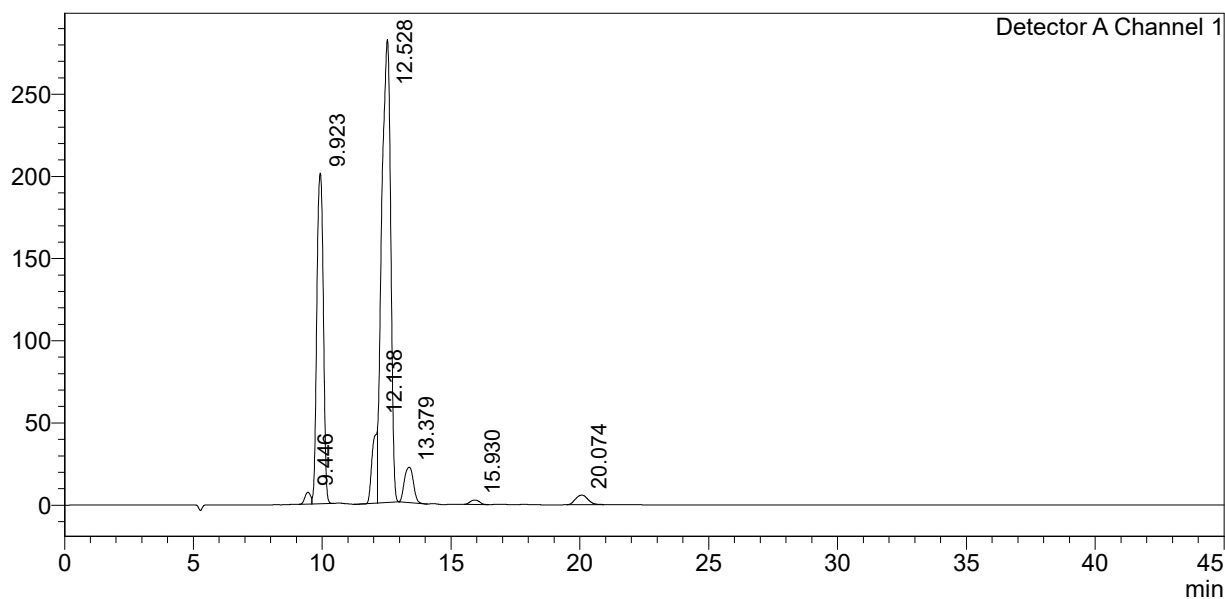
<<Column Performance>>

<Detector A>

Calculation Method : USP
 Unretained Peak Time : Time at 1st Peak
 Column Length : 150 mm
 Calculate Identified Peaks Only : Off
 Calculation of Relative Retention Time : Off

<Chromatogram>

mV



<Peak Table>

Detector A Channel 1

Peak#	Ret. Time	Area	Height	Conc.	Unit	Mark	Name
1	9.446	114162	7277	0.000			
2	9.923	3563805	201335	0.451	mol/L	V	Glycerin
3	12.138	611144	43270	0.142	mol/L	M	Ethylenglykol
4	12.528	6782830	281625	1.165	mol/L	V M	1,2 Propandiol
5	13.379	521717	21511	0.095	mol/L		Hydroxyaceton
6	15.930	67980	2711	0.037	mol/L		Ethanol
7	20.074	193775	5793	0.056	mol/L		n-Propanol
Total		11855413	563522				